

## Description

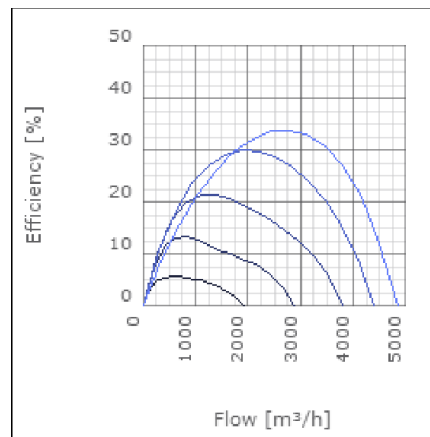
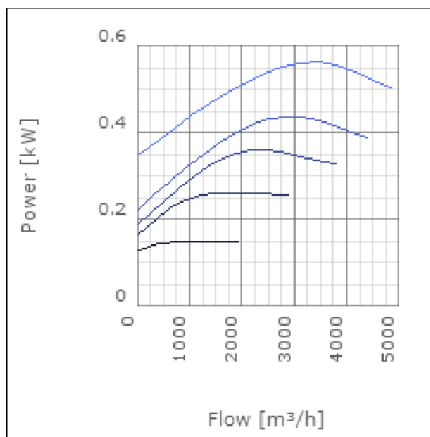
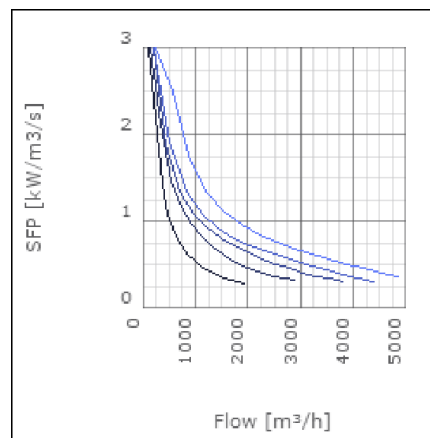
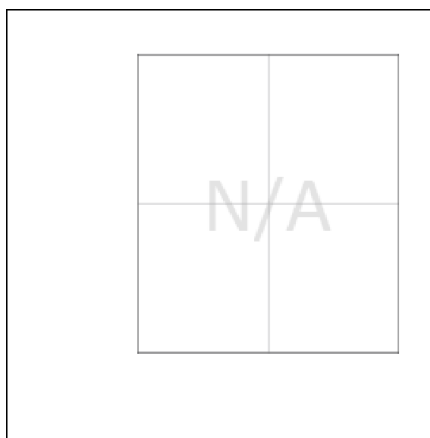
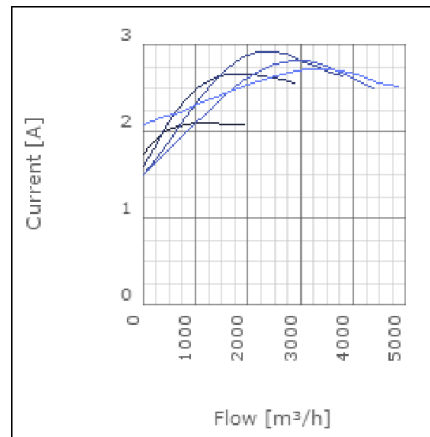
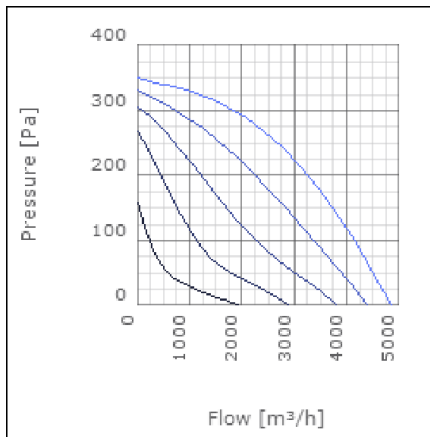
RKB is a range of straight flow in-line centrifugal duct fans designed for rectangular ducts. They are compact, high capacity fans which operate quietly and can be fitted in any position. RKB fans have backward curved impellers and are designed to cope with high pressure and long duct. The fans have a rigid housing made from galvanised steel. They are moisture proof and approved for use in outdoor environments. The motors are maintenance free and protected from overheating by thermo contacts. The impellers only require occasional cleaning. This cleaning is made easy with the RKB's swing out design. All fans are supplied fully wired and ready to fit in a sealed installation unit. The fans are not intended for transporting grinding dust, soot or similar. RKB fans come in 25 sizes.



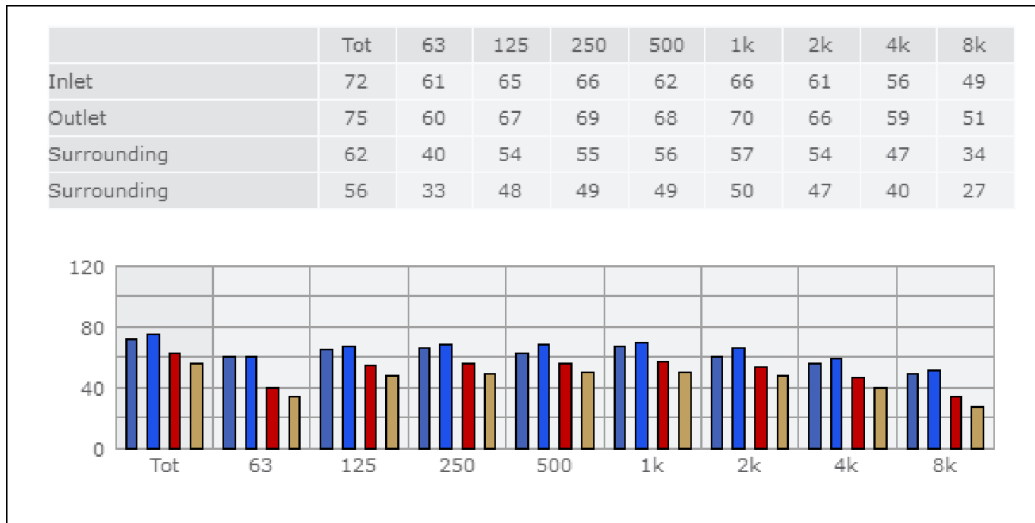
## Technical data

| Parameter   | Value         | Unit  |
|---|---------------|-------|
| Voltage   | 230           | V     |
| Phase   | 1             | ~     |
| Frequency   | 50            | Hz    |
| Power   | 0.56          | kW    |
| Current   | 2.73          | A     |
| R.p.m.  | 15            | r/s   |
| Max. temperature of transported air                       | 40            | °C    |
| Max. temperature of transported air when speed-controlled | 40            | °C    |
| Sound pressure level at 3 m                               | 55            | dB(A) |
| Length  | 787           | mm    |
| Width   | 743           | mm    |
| Height  | 452           | mm    |
| Weight  | 40.5          | kg    |
| Enclosure class, motor                                    | 44            | IP    |
| Insulation class, motor                                   | F             |       |
| Capacitor   | 12            | µF    |
| Duct connection   | 700x400<br>mm |       |

Diagrams



Sound



**Parameter**

Distance: 3.000  
 Propagation type: Hemi-spherical  
 Equivalent absorption area: 20.00

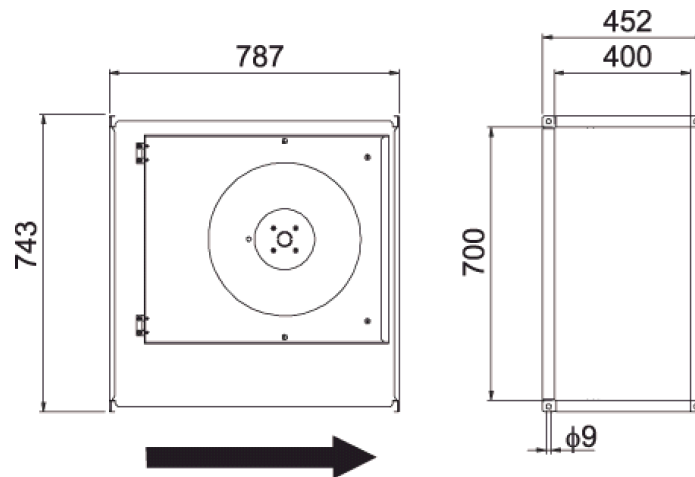
**Checked point**

Flow 2812.95m<sup>3</sup>/h  
 Static pressure 241Pa

**Working point**

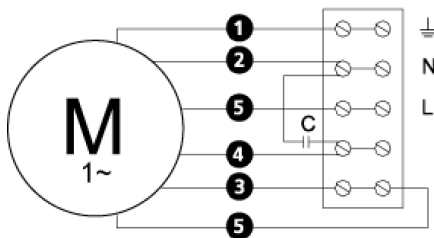
Flow 2814.095m<sup>3</sup>/h  
 Static Pressure 241Pa  
 Power 0.56kW  
 Speed 0r/s  
 Current 2.7A  
 Voltage 230V  
 Efficiency 33.91%  
 SFP 0kW/m<sup>3</sup>/s

## Dimensions



## Wiring diagram

4040005



- (M) = Fan Motor
- (M1) = Fan Motor
- (M2) = Fan Motor
- (M3) = Rotor Motor
- 1 = Yellow/Green
- 2 = Black
- 3 = Blue
- 4 = Brown
- 5 = White (TW)
- 6 = Orange
- 7 = Grey
- 8 = Red
- 9 = Green
- 10 = Violet

## Accessories

ETFV-94A  
FRE 6  
VRDE 3  
VRS 4,0  
VRTE 3

## Electrical accessories

FLR 700x400  
DS 700x400  
LDR 700x400